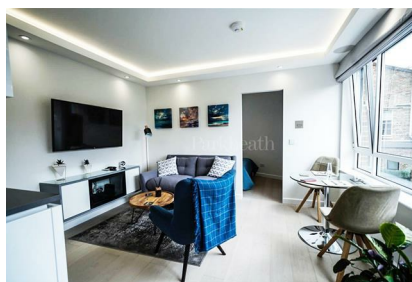
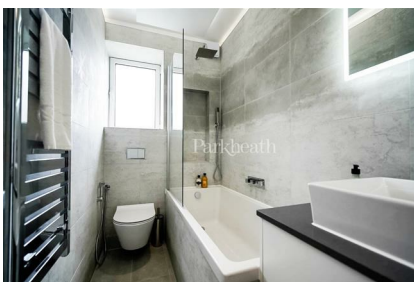


Parkheath

Sold on Service

Fairhazel Gardens NW6

£1,700 PCM (£392 per week) - Camden Band C



Well presented 1 bedroom apartment

Reception room with open plan fitted & integrated kitchen

Underfloor heating

Double glazed

6 minute walk to Swiss Cottage underground station

Recently refurbished

Engineered oak wood flooring

Luxury bathroom

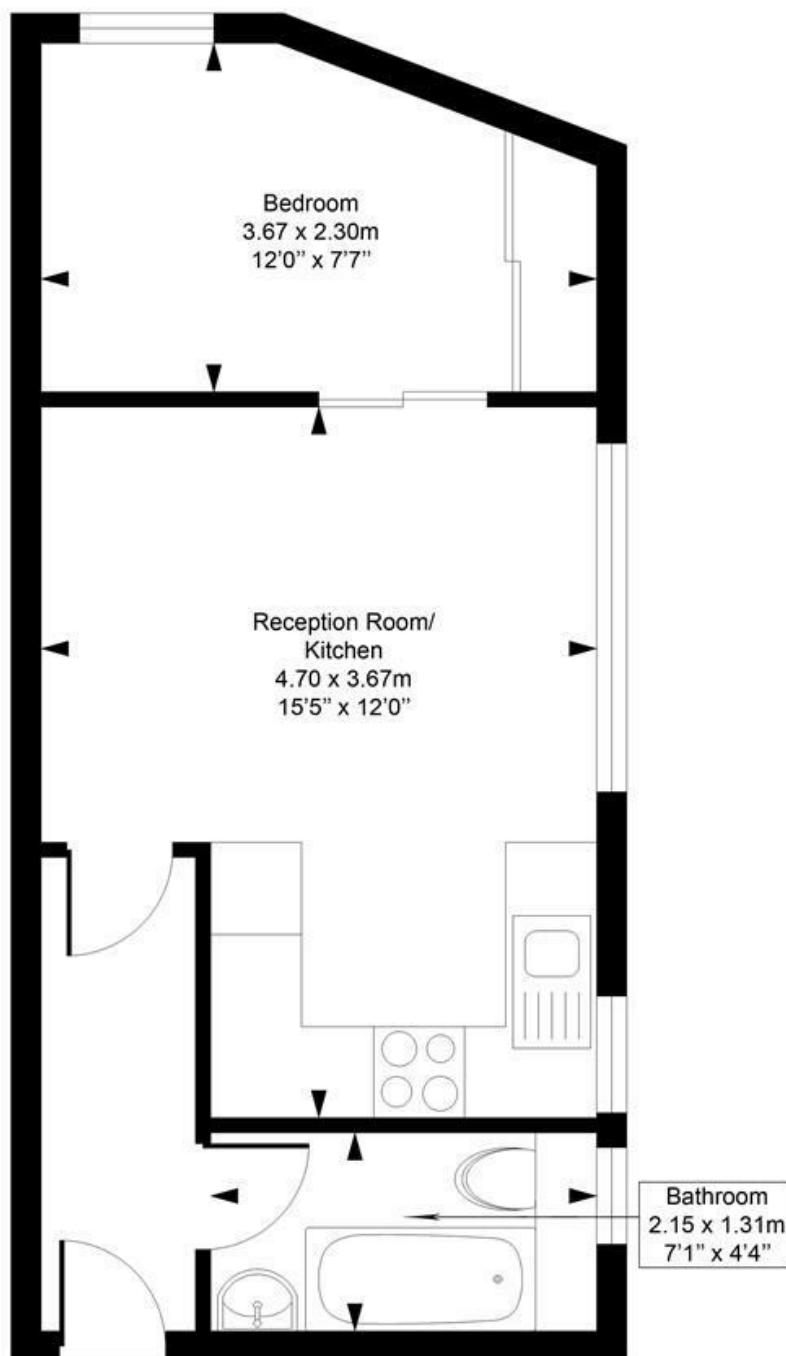
2 minute walk to South Hampstead overground station

South Hampstead Office 020 7625 4567

West Hampstead Office 020 7794 7111

Fairhazel Gardens

Approximate Gross Internal Area = 30.4 Sq m / 327 sq ft



First Floor

Measured in accordance with RICS guidelines. Every attempt is made to ensure accuracy

However all measurements are approximate.

The floor plan is illustrative purposes only and is not to scale

ELLIE CLAIRE PHOTOGRAPHY LTD

www.ellieclairephotography.com

The particulars do not constitute part of an offer or contract. The particulars, including text, photographs and plans, are for the guidance only of prospective purchasers/tenants and must not be relied upon as statements of fact. The descriptions provided therein represent the opinion of the author and whilst given in good faith should not be construed as statements of fact. Nothing in these particulars shall be deemed a statement that the property is in good condition or otherwise or that any services or facilities are in good working order. All measurements are approximate